

**Vidéo
de démonstration
pour la basse**

Extrait 1

♩ = 96 ♩ = $\begin{smallmatrix} \text{r} & 3 & \text{r} \end{smallmatrix}$

TAB

3 x 0 — 1 2 3 x 0 — 1 — 1 — x 1 — 3 — 1 3

Extrait 2

The musical score for 'Extrait 2' is presented in 4/4 time. It consists of two staves: a bass staff and a guitar TAB staff.

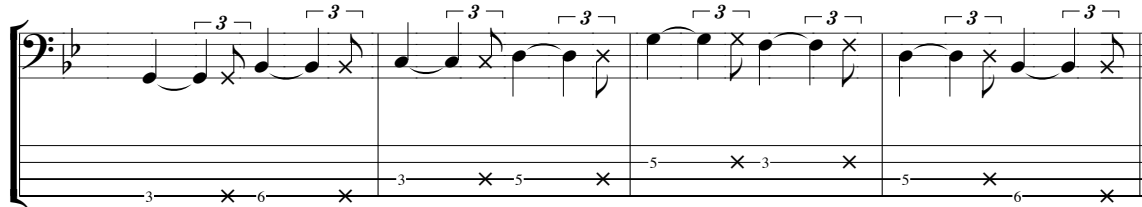
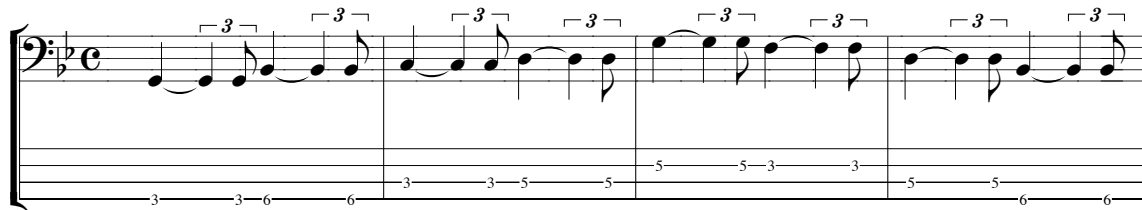
Bass Staff:

- Measures 1-4: A sequence of eighth and sixteenth notes. Above the staff are fingerings: P, P, T, P, T, T, P, P, P. There are 'x' marks under the notes in measures 1, 2, 3, and 4.
- Measures 5-6: Rests, indicated by a double bar line with a slash.
- Measures 7-9: A sequence of eighth and sixteenth notes. Above the staff are fingerings: P, P, T, P, T, P, P, P. There are 'x' marks under the notes in measures 7, 8, and 9.
- Measure 10: A whole note with a fermata.

Guitar TAB Staff:

- Measures 1-4: Fingering numbers (7, 8, 7, 5, 6, 5) are shown above the staff. There are 'x' marks under the staff in measures 1, 2, 3, and 4.
- Measures 5-6: Rests, indicated by a double bar line with a slash.
- Measures 7-9: Fingering numbers (7-9, 7-10, 6-9, 7-8, 6-7) are shown above the staff. There are 'x' marks under the staff in measures 7, 8, and 9.
- Measure 10: A whole note with a fermata, indicated by a '0' under the staff.

Extrait 3



Extrait 4

[illegible]

4/4

A7

G7

G7/4

TAB

© 2011 by PLAY MUSIC Publishing



videos-guitare.com



videos-basse.com



videos-batterie.com



videos-piano.com

International Copyright Secured • All Rights Reserved